

REINVENTING ECO-FRIENDLY FURNITURE

DIGGING INTO URBAN GARDENING

THE SEASON'S HOTTEST DÉCOR TRENDS

DENVER LIFE
home+design

**URBAN CHIC
TO MOUNTAIN
RETREAT**

**Peek Inside
4 Colorado Homes**

plus

**CREATING THE
PERFECT SUMMER
SANCTUARY**

PLEASE DISPLAY UNTIL 10.01.15 \$6.95





FROM THE INSIDE OUT

A seasoned interior designer and talented local builder work together to give a prairie-style home a modern punch.

BY NICOLE HOLLAND PEARCE | PHOTOGRAPHY BY JAMES MAYNARD



▲ **MODERN CLASSIC**

The use of mixed materials such as steel and wood throughout the home creates a classic aesthetic with a modern twist.

◀ **MAKE AN ENTRANCE**

An 11-foot unsupported overhang over the front porch seems to float effortlessly amongst the Roman bricks that compose the exterior façade.

With its generous use of horizontal lines and bands of windows spanning the periphery, along with its finely edited appearance, this modern prairie-style structure in Washington Park has a historical backbone: Frank Lloyd Wright's famous Chicago-built Frederick C. Robie House.

While this home has a swath of uniqueness, the builder, Bryan Bozeman of Stone Cloud Construction, a boutique real estate, architectural design-build firm in Denver, went to great lengths to mirror some original elements of the Robie House built in 1910. For instance, he knew that the iconic brick façade was something to be carried over into the new design concept. "I was told by the main brick supplier in town that I would not be



▶ SEAMLESS DESIGN

The dining room was designed to exist in the space as a whole—seamlessly integrating into the kitchen and living areas surrounding it. A sculptural Terzani lighting feature hangs above the Claro walnut dining table, which is flanked by patterned seating.

◀ GLAM FACTOR

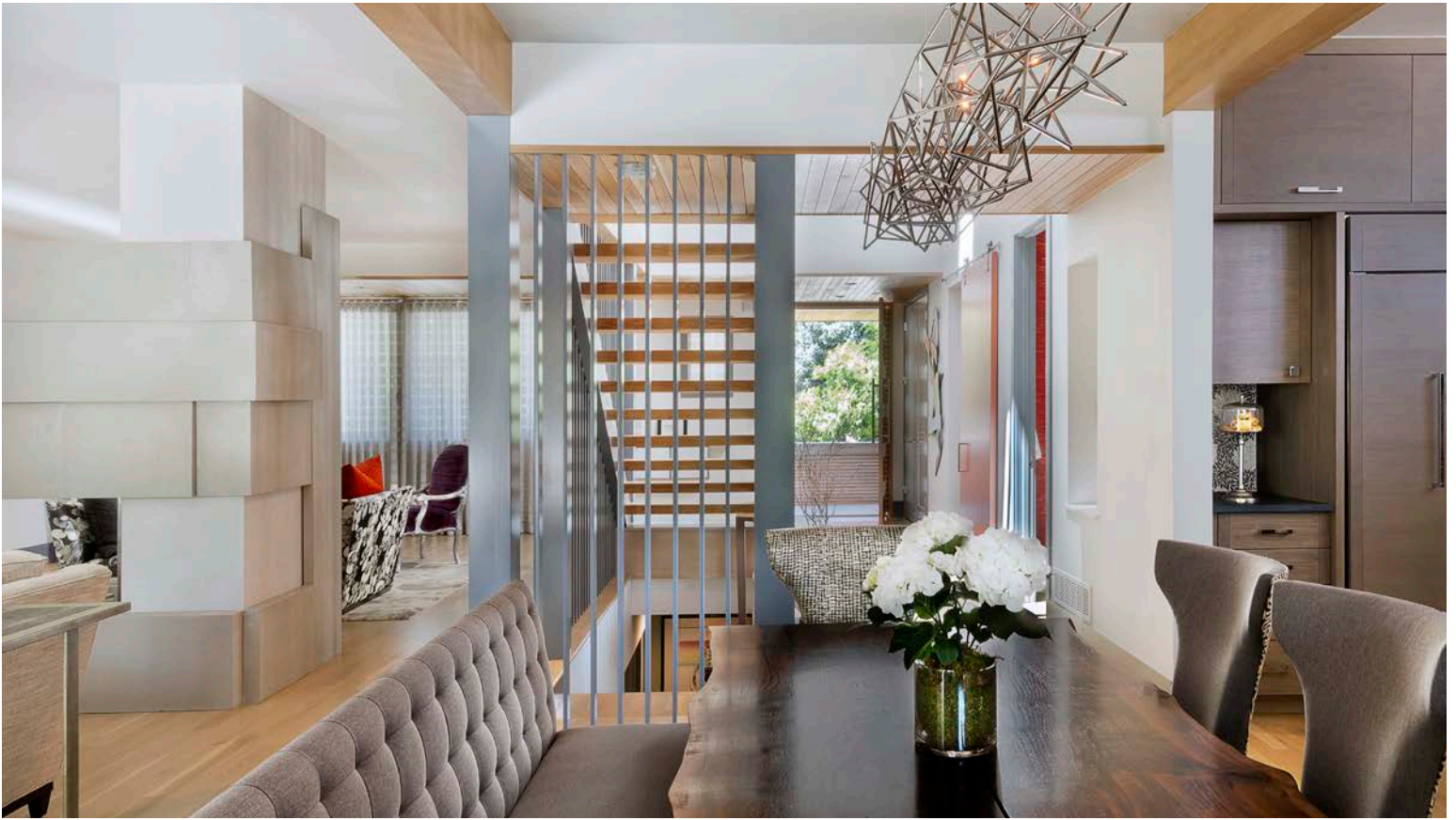
The guest bathroom radiates a delicious crimson hue emitting from the red glass tile wallcovering. Textured wallpaper adds another visual element into the space, which boasts Swarovski Crystal lighting features affixed above a floating vanity.

able to find the long, skinny Roman brick anymore,” Bozeman says. After three months of searching, he was able to locate the brick in Kansas, and created a custom color blend using the hard-to-find brick. He also incorporated red vertical and gray horizontal mortar joints as a nod to Wright’s original project.

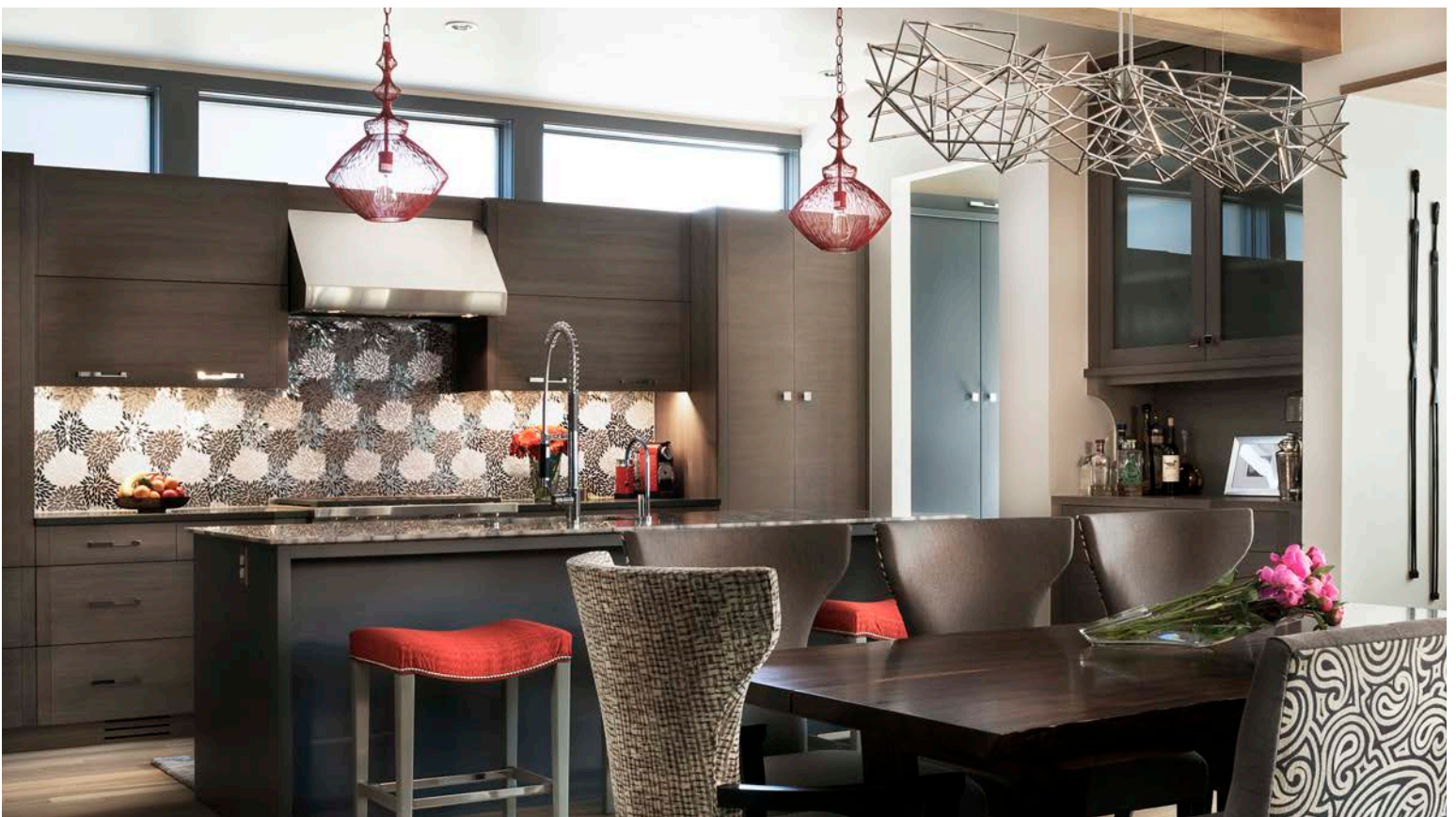
Bozeman configured the blueprints to allow the home’s exterior elements to be carried indoors, and then back out again through the backyard. The continuation of material, texture and color creates a sense of openness that translates the sharper modern lines into a welcoming environment.

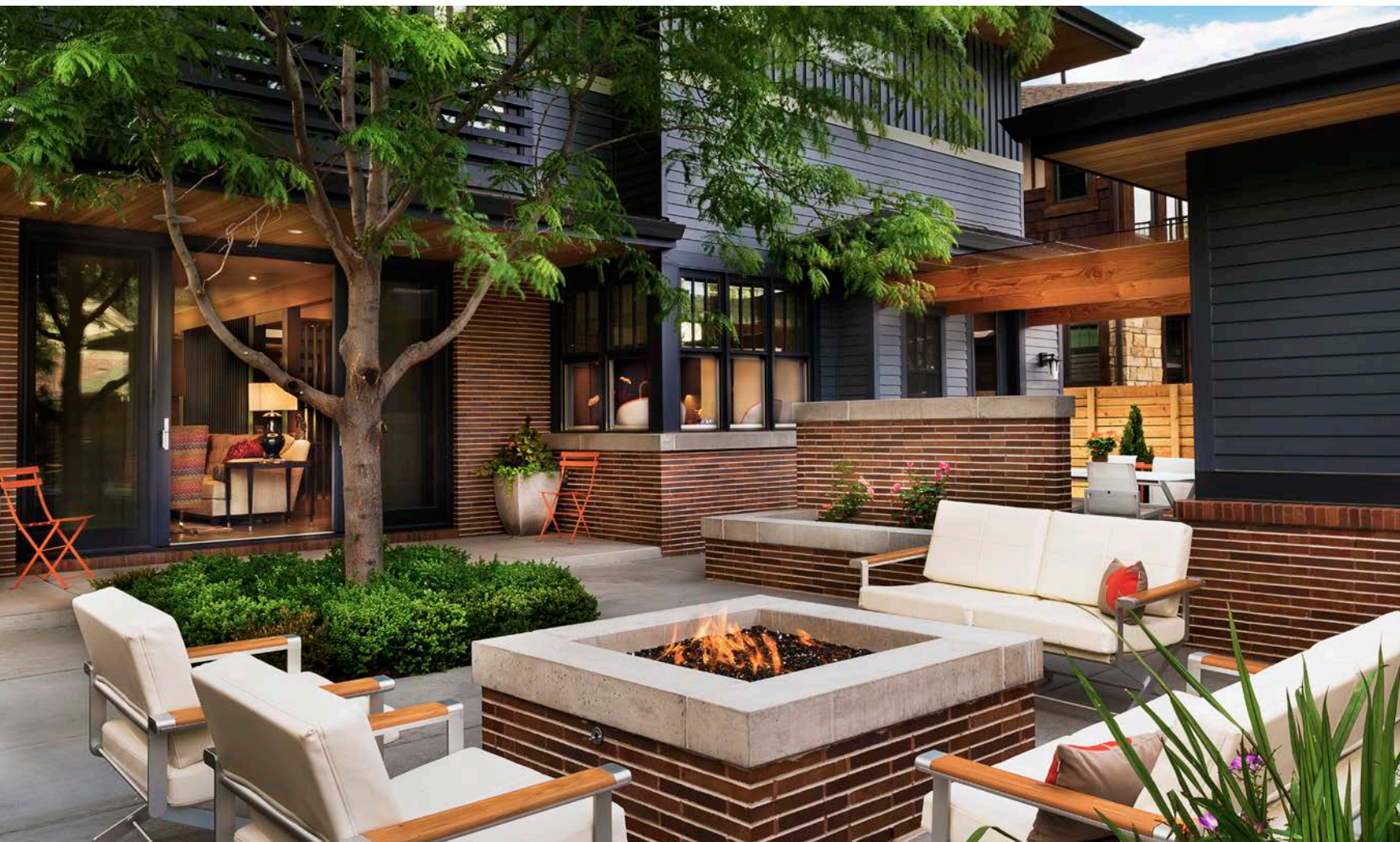
During the framing stage, the design caught the eye of Susan Schwab. A designer and co-owner of design firm Company KD LLC, she bought the home and began lending her expert eye to the aesthetic. Schwab leans toward classic design and uses modern punches to create an eclectic mixture in her living spaces. When she came on board the project, the visions of both she and Bozeman quickly aligned. “I wanted the interior to flow from the outside in, and inside out,” Schwab says. The organic materials are repeated throughout the home, contributing to the livability of the flowing floor plan.

The front of the home employs a cedar tongue-and-groove soffit that Bozeman carried into the foyer, immediately inviting guests in. Inside, the staircase serves as the central architectural focal point but it was a puzzle of a design, recalls Bozeman, who spent night after night sketching out the specifications. The resulting steel beam and wood structure sets the entire tone of the aesthetic composition.



ARTFUL & ELEGANT The kitchen features warm gray-stained rift-sawn oak with horizontal graining and vertical banding—a linear contradiction that is a common theme in the home. An artistic tile backsplash remains in the neutral color palette, but the intricate leaf-like pattern provides a rich contrast in the monochromatic milieu. A pair of red Currey and Company pendants take advantage of the upper third of the room's visual space, adding bright pops of color.

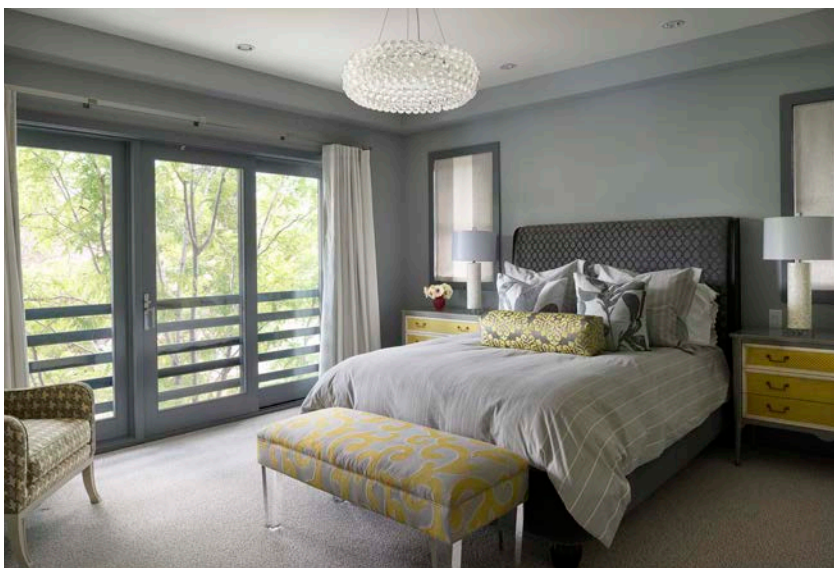


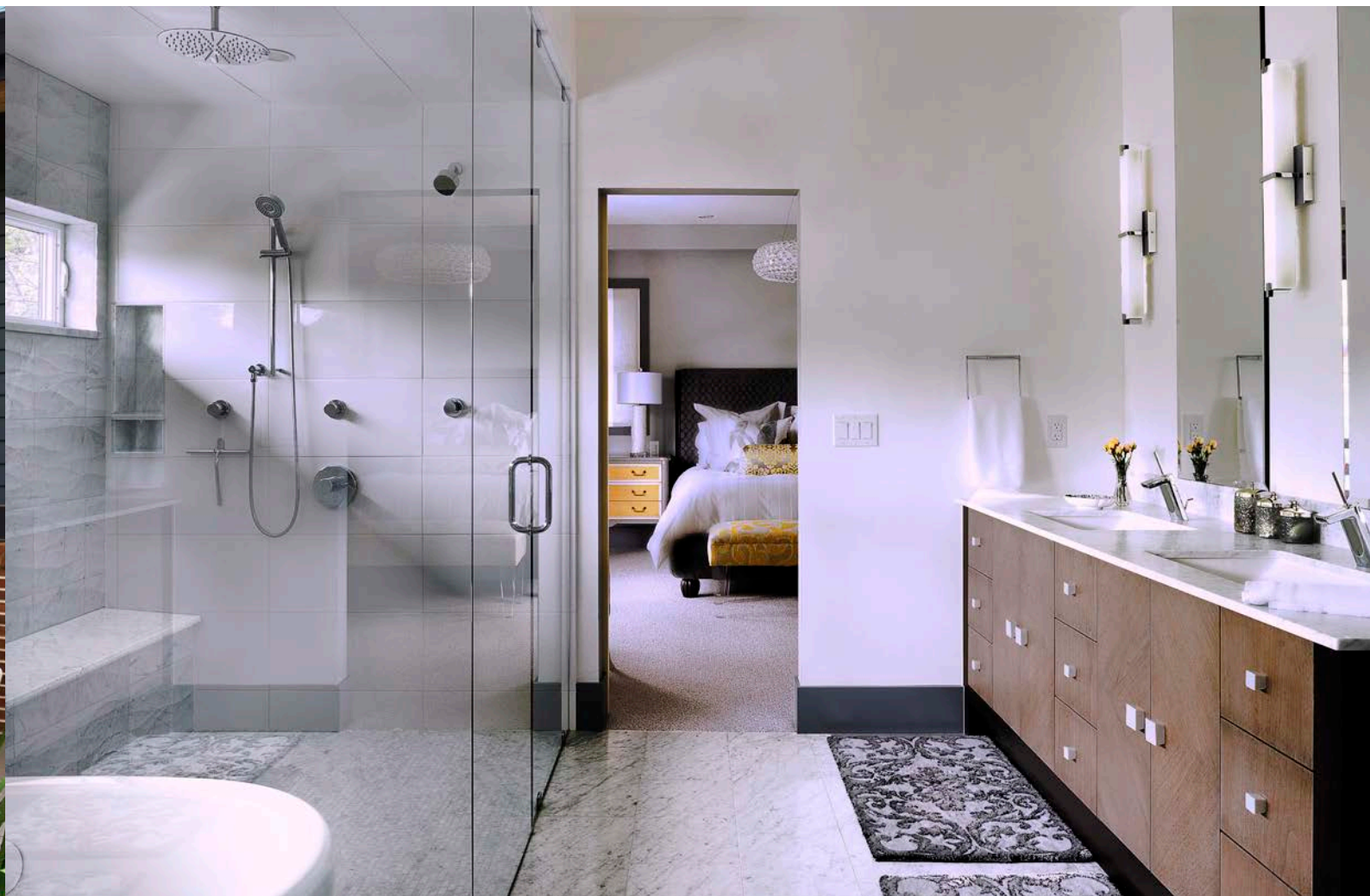


With a grand collection of art curated over many years, Schwab took special care in designing showplaces for her pieces. These areas present the works in gallery-like settings, without adding the austere nature that often accompany displayed art. Artistic choices were made throughout the home, including bright, sliding barn doors, jewel-toned wallcoverings, show-stopping lighting fixtures and a collection of bold fabric patterns throughout the environment. The residence boasts a mixture of materials, with pops of bold color and texture found in the fabrics and furnishings, which coalesce and carry out the architectural details.

The interior's ambiance continues to the back patio, which is divided into "rooms." Horizontal brick and stone are stunning in the backyard space, with a large fire pit taking center stage. Beyond the half-wall, a glass-covered back breezeway offers a space for al fresco dining.

BUILT FOR ENTERTAINING The backyard flows effortlessly from the kitchen and provides two areas of entertainment: one for lounging by the fire pit, and the other, to enjoy a meal at the outdoor dining table. By repeating the Roman bricks pulled from the home's façade, an appealing symmetry is created from the front of the home to the back.





SUITE RETREAT

Upstairs marks the private spaces, which include the master suite and full laundry area. The master bedroom is designed in gray with bursts of yellow. The furniture is an eclectic collection, housing an acrylic-legged bench and a French antique Poudre vanity. Overhead, the crystal chandelier adds an airy sophistication.

RESOURCES

Interior Designer: Susan Schwab, Company KD LLC, 303.355.1840 companykd.com

Builder: Bryan Bozeman, Stone Cloud Construction, 720.722.4040 stonecloudco.com

Square Feet: 3,300 square feet above grade; 5,000 including basement



SPA-LIKE AMENITIES

A yellow barn door leads into the master bath, which is filled with Carrera marble in varying sizes. The large “wet room” houses a deep Bain Ultra soaking tub, a bench seat and multiple shower heads.